



AUSTRALIA



RES AU **Outperform**

Price 15 Nov 11 **A\$0.47**

Volatility index

12-month target **A\$ 0.75**

12-month TSR **% +59.6**

Valuation **A\$ 0.66**

- DCF (WACC 13.9%, beta 1.3, ERP 6.0%, RFR 8.0%)

GICS sector **Energy**

Market cap **A\$m 124**

30-day avg turnover **A\$m 0.1**

Number shares on issue **m 262.9**

Investment fundamentals

Year end 30 Jun		2011A	2012E	2013E	2014E
Revenue	m	0.0	0.0	0.0	0.0
EBIT	m	-6.3	-3.7	-5.4	-5.5
Reported profit	m	-5.1	-1.7	-2.7	-8.1
Adjusted profit	m	-5.1	-1.7	-2.7	-8.1
Gross cashflow	m	-5.0	-2.4	-3.6	-11.0
CFPS	¢	-2.3	-0.9	-1.4	-4.3
CFPS growth	%	-10.4	60.1	-53.5	-203.5
EPS adj	¢	-2.3	-0.7	-1.0	-3.1
EPS adj growth	%	-9.7	71.1	-53.5	-203.5
Total DPS	¢	0.0	0.0	0.0	0.0
Total div yield	%	0.0	0.0	0.0	0.0
ROA	%	-5.4	-2.7	-2.3	-1.0
ROE	%	-4.6	-1.3	-2.0	-6.5
EV/EBITDA	x	-12.5	-25.9	-18.0	-17.6
Net debt/equity	%	-18.2	-14.5	145.4	501.6
P/BV	x	0.8	0.9	0.9	1.0

Source: FactSet, Macquarie Research, November 2011
(all figures in AUD unless noted)

Gareth Neilson
+27 11 583 2318 gareth.neilson@macquarie.com

16 November 2011
Macquarie First South Securities (Pty)
Ltd

Resource Generation

Not just about the coal

A South African coal explorer...

We initiate coverage on Resource Generation (ResGen), an Australia and JSE listed coal exploration and development company, with an Outperform recommendation and a 12-month target price of A\$0.75 (R6.00)/share. ResGen has a significant thermal coal resource of 3.1bn tonnes in South Africa's Waterberg coalfield from which it is focusing on the development of the Boikarabelo project.

...with big plans...

- Boikarabelo is targeting saleable production of ~15mtpa in two stages by 2020, split evenly between export and domestic thermal coal. The operation constitutes a shallow open pit mine which is relatively low cost as a result.
- Based on conservative assumptions and risk adjusting the NPV of Stage 1 and 2 by 25% and 50% respectively, we still value the project at A\$146m.
- The company has secured export off-take agreements for its coal with Indian companies Integrated Coal Mining Limited (a 7% shareholder in ResGen) and Bhushan Steel for 2.5mt of export coal of Stage 1 and 4.5mt of Stage 2 production.

...but with considerable infrastructure-related risks

- The biggest risk to the ResGen investment case, in our view, is that the Boikarabelo project fails to secure sufficient and timeous access to rail facilities to export coal via Maputo, Richards Bay and/or Durban as well as to supply Eskom's Mpumalanga power stations. ResGen are, however, making progress on this front and recently signed a Memorandum of Understanding (MoU) with Transnet Freight Rail (TFR).
- In addition, while ResGen has contracts in place for export thermal coal, securing a customer (ie. Eskom) for the domestic thermal coal for both Stage 1 and 2 is crucial.
- In order to raise the necessary project finance for Boikarabelo, ResGen needs to secure both a definitive rail haulage contract with TFR and a coal supply agreement with Eskom. Any delay in meeting these conditions "precedent" would delay the development of the project.

Catalysts

While we believe that we have been sufficiently conservative in our modelling and have further risk adjusted our valuation there is still upside from the current share price. We acknowledge, however, that realisation of this upside depends on the company making progress on:

- ⇒ Conclusion of a rail haulage contract with TFR, and
- ⇒ Securing a domestic supply agreement with Eskom.

Both of these are the subject of ongoing work by the various parties involved and could take some time to conclude.

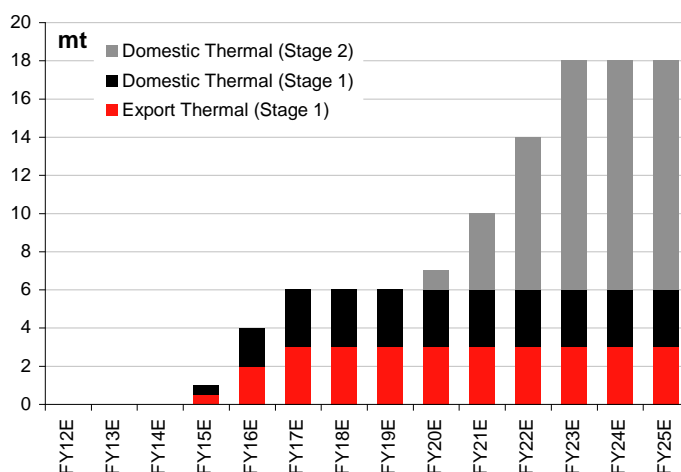
Inside

Not just about the coal 3
 What is Resource Generation? 4
 Development plans 6
 Infrastructure is THE key risk 12
 Regulatory risks – Following due process 15
 Valuation & Recommendation 16
 Appendix 1 – The Thermal Coal Market 20

Company profile

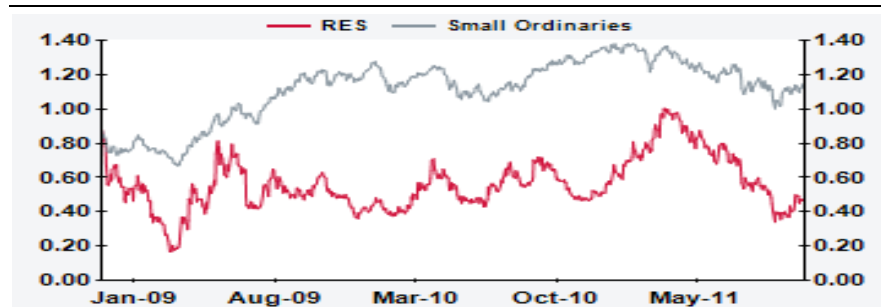
- ResGen is an Australian coal exploration and development company with significant thermal coal resources in South Africa’s Waterberg coalfield. In addition it holds the rights to various prospective uranium tenements in Cameroon.
- The company, which is listed on the ASX (RES) and the JSE (RSG), was until September 2008 named Comdek Limited and was involved in the telecommunications industry.
- ResGen’s key asset in South Africa is the Boikarabelo thermal coal project which is targeting ~15mtpa of saleable coal production, split evenly between the export and domestic power generation markets. The company expects production to start in 2014.
- ResGen has secured an off-take contract with a key shareholder, Integrated Coal Mining Limited (an associate company of Calcutta Electric Supply Corporation India (CESC)). The off-take makes provision for 1mtpa of coal for the first three years of production, increasing to 2mtpa for a further 35 years.

Fig 1 Plans to become a sizable coal producer – Macquarie forecast



Source: Company data, Macquarie Research, November 2011

Fig 2 RES AU vs Small Ordinaries



Source: FactSet, Macquarie Research, November 2011

(all figures in AUD unless noted)

Not just about the coal

In our opinion, ResGen offers attractive returns from current levels. It has a sizeable, shallow, coal resource in an established, but developing, coal producing area and has already secured long-term strategic customers for its product. Our key concern is around the infrastructure development required to support the project - power, water and rail.

Investment Positives

Valuation looks attractive – Based on conservative assumptions and significant discounts to NPV for both stages of the Boikarabelo project, we value ResGen at A\$170m or A\$0.66/share. The resultant 12m forward target price of A\$0.75/share offers 60% upside to the current A\$0.47 share price. Additionally, the stock is trading at a EV/Resource t of 0.5 – cheaper than most peers and 5% below its closest comparator Firestone Energy.

Large, shallow, resource allowing for low cost opencast mining – ResGen has 3.1bn tonnes of coal resources in a ~120m multi-zone seam under only 20m of overburden in the Waterberg coalfield. The resource allows for low cost open pit mining in an area where Exxaro (EXX SJ, R180.98, Neutral, TP: R190.00) has been mining the same “seam” since 1980.

Mining right obtained and other approvals in process – The company has already been awarded a mining right for the Boikarabelo project and owns the surface rights over the planned mining area. An initial EIA (Environmental Impact Assessment) has been approved as part of the mining rights approval process and an IWUL (Integrated Water Use Licence) application for Stage 1 has been submitted.

Off-take agreements in place for export coal – ResGen has agreements in place with ICML (a 7% shareholder in ResGen) and Bhushan Steel for the majority of the export coal produced in Stage 1 and Stage 2 of the Boikarabelo project to be shipped to the respective companies' operations in India. The company is in discussions with Eskom to secure an off-take agreement for domestic thermal coal.

A MoU in place with TFR for rail capacity – Access to rail capacity for export and domestic coal sales is fundamental to the ResGen business case and, while in continual discussions with TFR, the company now has an MoU in place, with TFR, which covers the Stage 1 volume of the project.

Fully black empowered – BEE (Black Economic Empowerment) legislation requires that all mining assets are 26% black-owned by 2014 and both of ResGen's South African JV's have met this criterion - Ledjadja at 26% black-owned and Waterberg One 30%.

Investment Risks

Insufficient rail capacity - The biggest risk to the ResGen investment case is that the Boikarabelo project does not get sufficient and timely enough access to rail facilities to export coal via Maputo, Richards Bay and/or Durban as well as to supply Eskom's Mpumalanga power stations. While ResGen has an MoU in place with TFR, the requisite coal raiing capacity is not currently in place and thus TFR/Transnet need to make a significant capital investment to resolve this. While we believe that there is a firm intention to put the capacity in place it is likely to take some time.

Domestic off-take contracts are key – While ResGen has contracts in place for export thermal coal (nice to have but a lot can change between now and first coal) securing a customer for the domestic thermal coal for Stage 1 of Boikarabelo (3mtpa) is crucial. In addition, Stage 2, although relatively low cost to develop, is wholly dependent on supplying a significant volume (12mtpa) of coal to a local power station customer (Eskom or IPP).

Project delays are thus a realistic risk – While we only model first coal from Boikarabelo in FY15E, and this is a full three years hence, ResGen's ability to raise project financing for the project is conditional upon securing a definitive rail haulage contract with TFR and a coal supply agreement with Eskom. Any delay in meeting these conditions would not only delay the flow of funds and hence the development of the project but could also result in upward revisions in the project capex.

What is Resource Generation?

ResGen is an Australian coal exploration and development company with significant thermal coal resources in South Africa's Waterberg coalfield. In addition it holds the rights to various prospective uranium tenements in Cameroon.

The company, which is listed on the ASX (RES) and the JSE (RSG), was until September 2008 named Comdek Limited and was involved in the telecommunications industry.

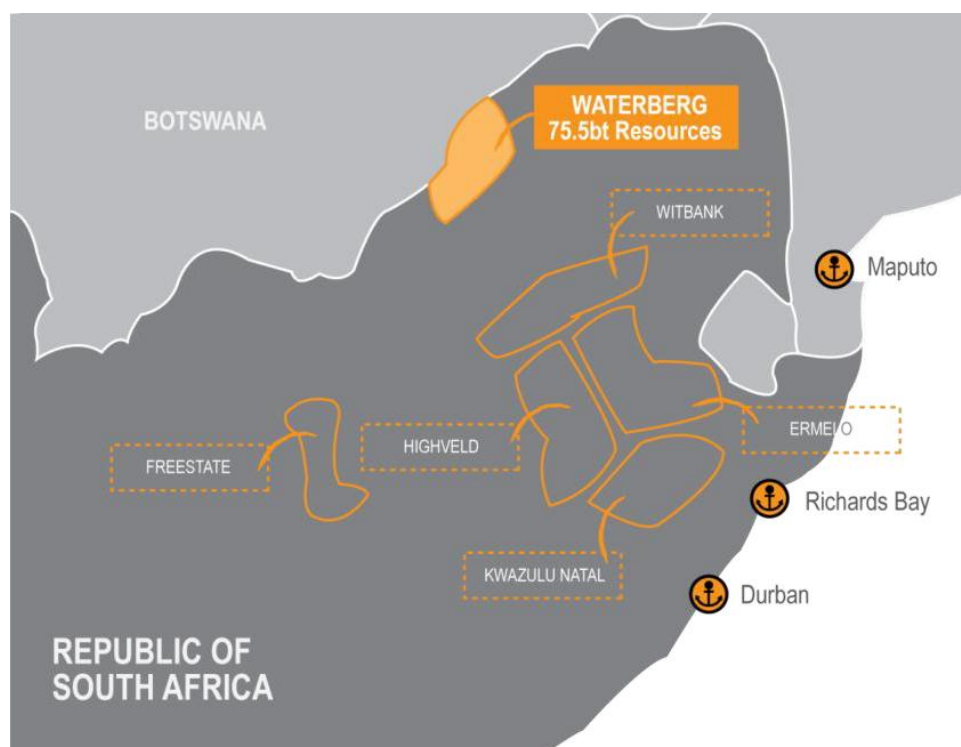
The company has a fairly broad shareholder base with major shareholdings being:

- ⇒ Integrated Coal Mining Limited (ICML) and its associate Bantal Singapore Pte Ltd (12%) – ICML is also ResGen's biggest off-take customer,
- ⇒ Scodella Inc & Associates (7%),
- ⇒ Commonwealth Bank of Australia and its subsidiaries (6%), and
- ⇒ Paul Jury, Managing Director of ResGen (6%).

Focussed on the Waterberg

ResGen has various coal exploration tenements within the significant Waterberg coalfield in South Africa's Limpopo province which together contain a currently defined resource of 3.1bn tonnes and are suitable for the production of an export thermal coal and a domestic power generation coal.

Fig 3 The Waterberg coalfield reportedly has 75.5bn tonnes of coal resources

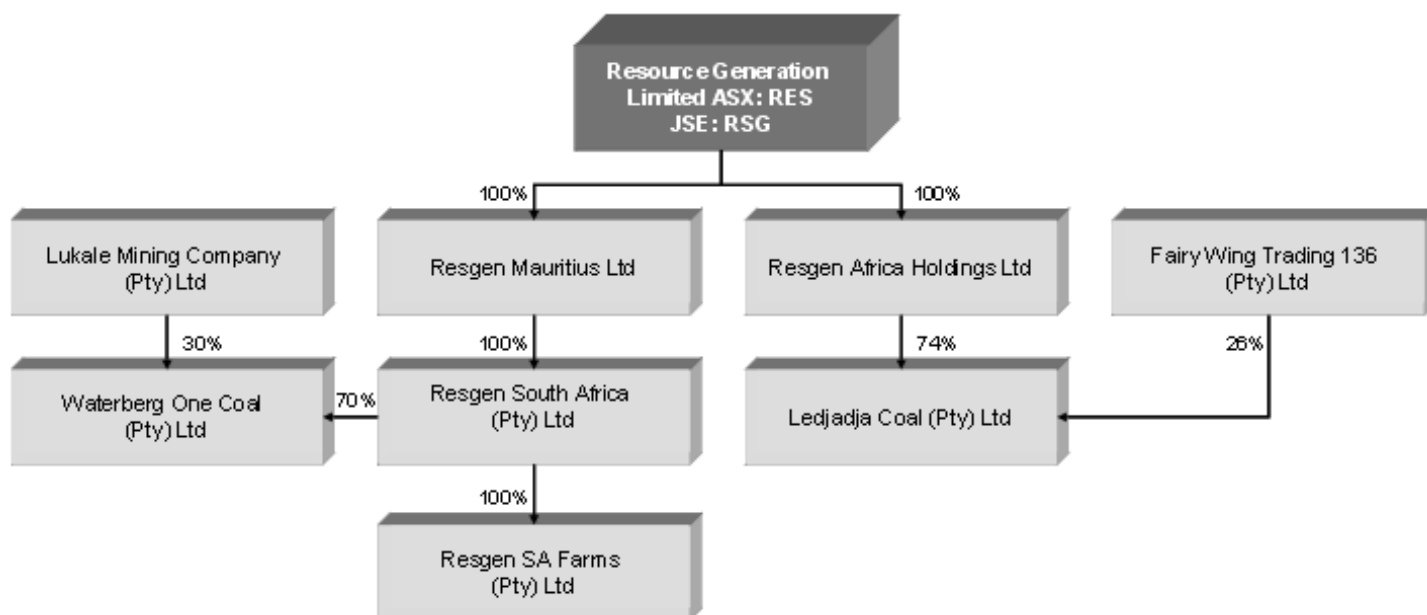


Source: Company data, November 2011

ResGen's tenements are held in two joint ventures (JVs):

- ⇒ **Ledjadja Coal** - in which the company has a 74% interest, with the remaining 26% held by its BEE partner Fairy Wing Trading 136 (Pty) Ltd, and
- ⇒ **Waterberg One Coal** – in which the company has a 70% interest with the balance held by BEE partner Lukale Mining Company.

Fig 4 Corporate structure



Source: Company data, November 2011

Uranium assets are not core

In addition to the coal deposits in South Africa, ResGen has an 80% interest in Uranex SA, a company incorporated in Cameroon, which holds the rights to 3 prospective uranium tenements in Cameroon. Very little exploration work has been done on these prospects to date and very little is planned.

Key personnel

Brian Warner - Chairman - Warner was appointed as the Non-Executive Chairman in October 2010. He is a metallurgist by trade and spent the last 20 years in mining research with various international merchant banking groups before retiring as the Senior Resources Analyst at Citibank, a position he held for 6 years.

Paul Jury - Managing Director - Jury has been MD of the company since July 2008. He has spent the last 25 years in the coal business having previously been CFO of Rio Tinto subsidiary Coal & Allied Industries (CNA AU, restricted), Finance Director at Coal Mines Australia Limited (a BHPB subsidiary), Executive Chairman at Oceanic Coal Australia and Managing Director at Resource Pacific which was sold to Xstrata (XTA LN, £10.03, Outperform, TP: £16.00) for A\$1.08bn in 2008.

Stephen Matthews - Finance Director - Matthews has over 25 years experience in corporate finance and commercial experience. He was previously a senior executive at Coal Mines Australia Limited, Billiton Coal Australia, BHPB's Hunter Valley Coal division and Resource Pacific.

Toby Rose - Non-Executive Director - Rose is a geologist and has over 45 years' experience in the New South Wales coal and minerals industry. His previous positions include being Director General of the New South Wales Department of Mineral Resources and various directorships at Coal Mines Australia Ltd., Billiton Coal Australia and Resource Pacific.

Hendrik van den Aardweg - General Manager Operations South Africa – Van Aardweg is a qualified Electrical Engineer with extensive experience in gold, coal, platinum and antimony mining. He previously worked for Total Coal.

Development plans

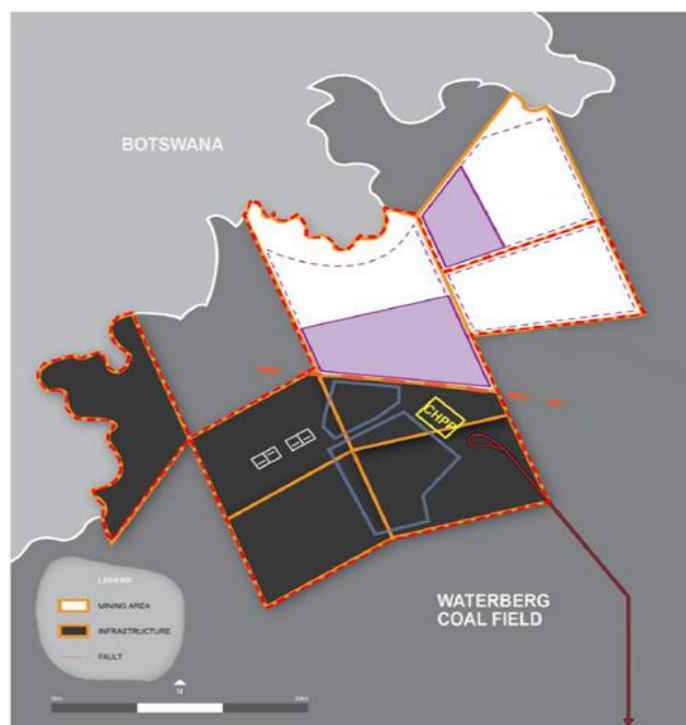
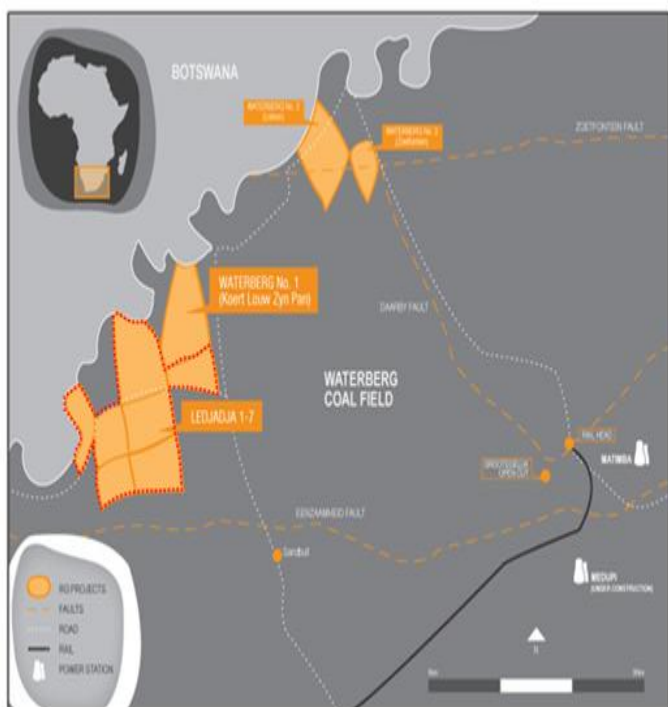
ResGen’s tenements are located in the western part of the Waterberg coalfield bordering the Botswana border.

The only operating mine in the whole Waterberg coalfield is the 18mtpa Grootegeluk operation which is owned by Exxaro (EXX SJ, R180.98, Neutral, TP: R190.00) and has been operating since 1980 and supplies 16mtpa to Eskom’s Matimba Power Station (PS), 2mtpa of coking coal to ArcelorMittal South Africa (ACL SJ, R66.67, Underperform, TP: R56.00) and some thermal coal to the local and export markets. Exxaro is currently expanding the Grootegeluk operation by 15mtpa to supply Eskom’s new Medupi PS from 2013.

Grootegeluk is ~25km from ResGen’s Boikarabelo Project and mines the same coal seams.

Fig 5 Waterberg No 1 is contiguous to Boikarabelo

Fig 6 Infrastructure covers most of the Ledjadja area



*Note: The area highlighted in red represents the Boikarabelo project
Source: Company data, Macquarie Research, November 2011

Source: Company data, Macquarie Research, November 2011

Boikarabelo is the key project

While the company has conducted exploration over a number of parts of its various tenements the key focus area is the Boikarabelo Project which is housed within the Ledjadja JV. The Waterberg No1 area, which is known as the Boikarabelo Extended Project, is contiguous to Ledjadja and is considered as a possible extension to Boikarabelo.

Having drilled 73 diamond-core holes and 120 percussion holes on the Boikarabelo and Waterberg No 1 property, ResGen has defined 3.1bn tonnes of gross in-situ coal resources, including probable reserves of 745mt.

Fig 7 Reserves and resources

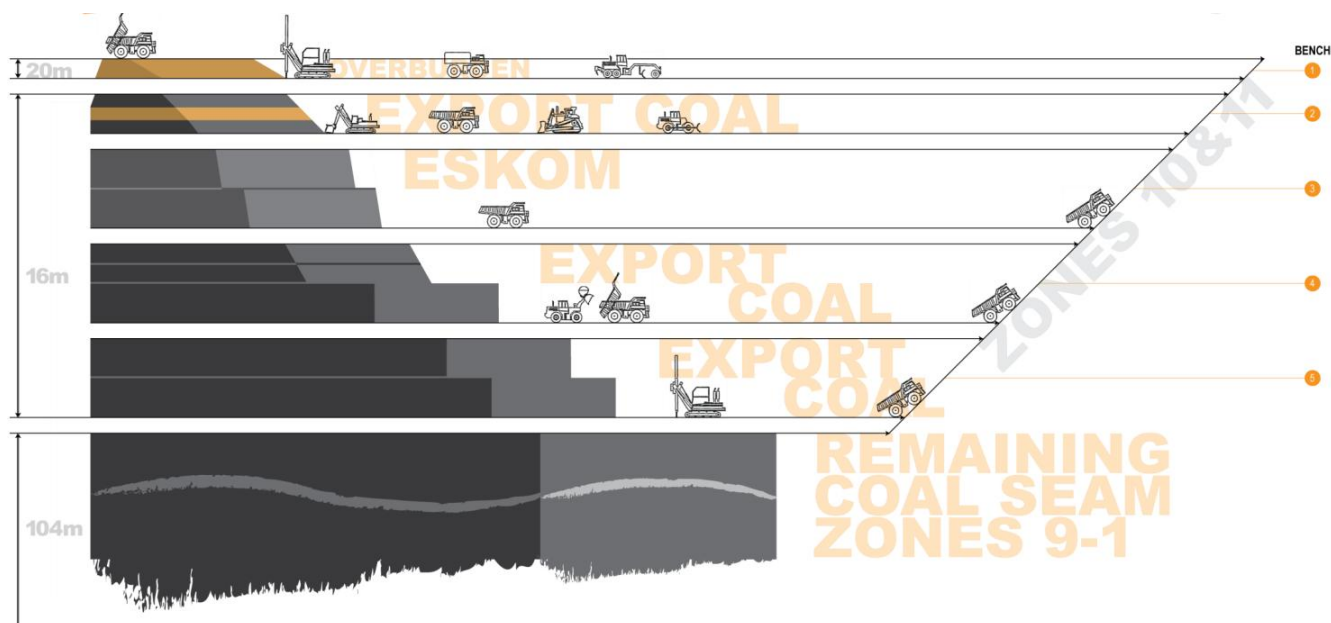
	Resources (mt)			Reserves (ROM mt)	
	Measured	Indicated	Inferred	Probable	Proven
Boikarabelo	664		1,480	431	
Waterberg No 1	426	552		314	
Total tonnage (mt)	1,091	552	1,480	745	0

Source: Company data, Macquarie Research, November 2011

Export and domestic thermal coal

The Waterberg coalfield typically contains 11 coal zones, numbered from 1 at the base to 11 at the top with overall “seam” thickness, including partings, ranging from 100-120m covered by ~20m of overburden.

Fig 8 Schematic of typical Waterberg coalfield geology, mining and coal products



Source: Company data, November 2011

While the upper coal zones (5 to 11), which have a combined thickness of ~60m, are of relatively lower quality and require beneficiation to produce an export quality thermal coal and a secondary lower quality power generation coal, the lower zones (1 to 4) of ~40m thickness require limited beneficiation to produce a power generation coal and zones 2 and 3 generally yield a small fraction (~10%) of semi-soft coking coal.

Fig 9 Thermal coal specifications

	Unit	Export thermal coal	Domestic thermal coal
Ash	%	14	29
Calorific value (NAR)	kcal/kg	5800	4400
Volatile	%	33	26
Sulphur	%	0.7	0.7
Total moisture	%	8.6	8.4
Inherent moisture	%	4.6	4.4

Source: Company data, Macquarie Research, November 2011

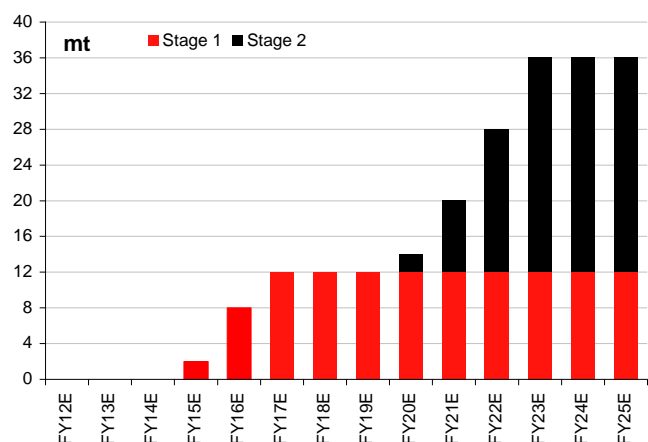
ResGen plans to focus primarily on producing export and domestic thermal coal from zones 10 and 11 over the first 3-5 years of production from Boikarabelo.

A two-stage plan for development

The project is expected to be developed in two stages:

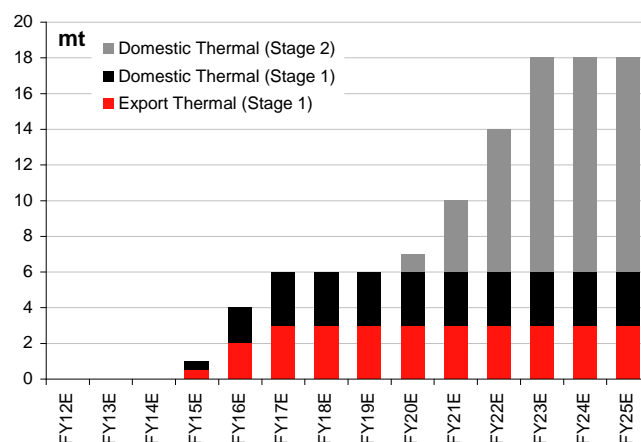
- **Stage 1** - will involve the establishment of the open-pit mining operation, as well as construction of a coal preparation plant, rail link and 40MW power station, with first production expected in 2014 (we assume 2015). The operation will produce 6mtpa of saleable thermal coal (50/50 export/domestic) from 12mtpa of ROM - ie. a 50% total yield.
- **Stage 2** - is expected to follow ~5 years after Stage 1 and result in total saleable production increasing by 12mtpa, to 18mtpa. While there is the potential for an export thermal coal fraction from Stage 2 (availability of rail capacity to port is the key driver), we assume 100% of the incremental 12mtpa output to be thermal coal for the domestic power generation market. With incremental ROM of 24mtpa the Stage 2 yield will be 50%

Fig 10 Boikarabelo ROM production (mt) – Macquarie forecast



Source: Macquarie Research, November 2011

Fig 11 Boikarabelo saleable production (mt) – Macquarie forecast



Source: Macquarie Research, November 2011

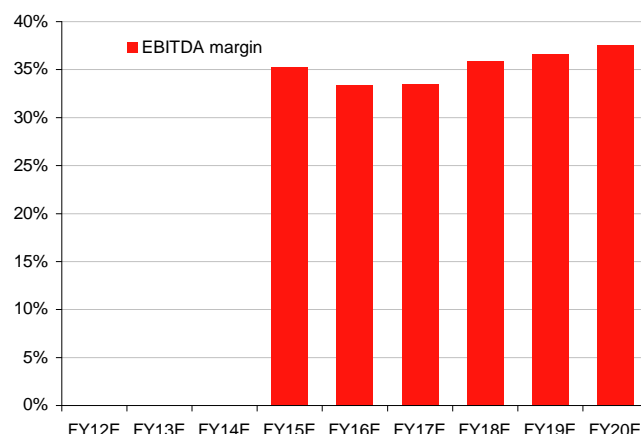
While we expect the FOR (free-on-rail), or at-mine, unit cost to be R120/saleable t the FOB (free-on-board) cash cost for the export thermal coal is likely to be significantly higher than this due to the high cost of rail/port access. We assume the coal is railed to the Richards Bay Coal Terminal (RBCT) and forecast rail costs of R260/t, port charges of R20/t and RBCT entitlement leasing charges of ~R80/t, resulting in a FOB cost of R480/t (US\$60/t) in 2011 terms.

Fig 12 Logistics costs are significant



Source: Macquarie Research, November 2011

Fig 13 EBITDA margins

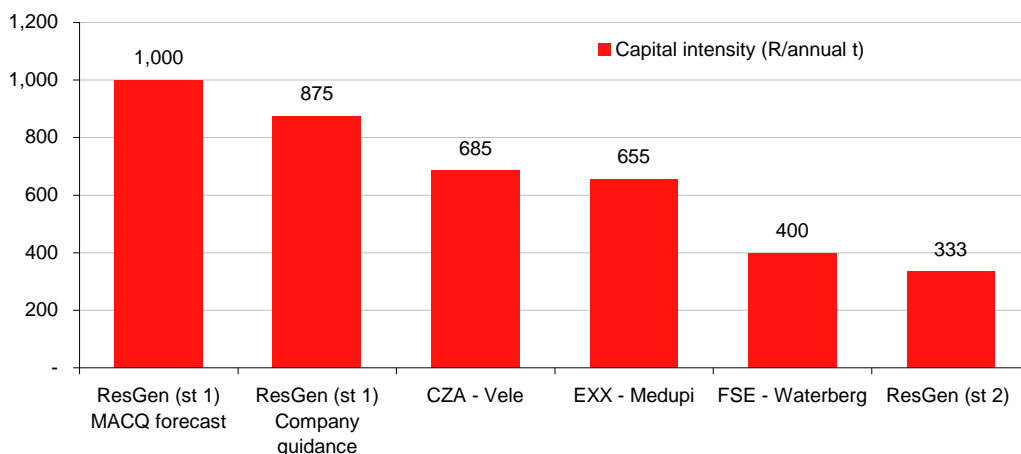


Source: Macquarie Research, November 2011

Capex intensity is 35% higher than Exxaro/Medupi

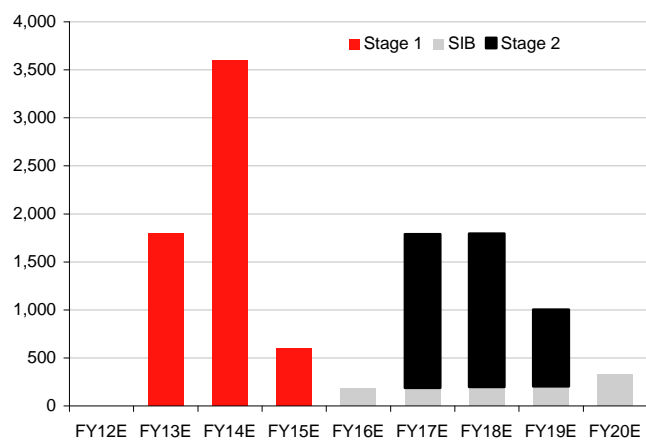
ResGen expects to spend ~R5.2bn (US\$750m) on Boikarabelo Stage 1 - R2.08bn on the coal preparation plant, R832m on supporting infrastructure, R416m on a 36km rail link to the main TFR line and R676m on the 40MW power station. We model 15% higher capex for Stage 1 (R6bn) and R4bn for Stage 2.

Fig 14 ResGen's capital intensity looks reasonable (R/annual t)



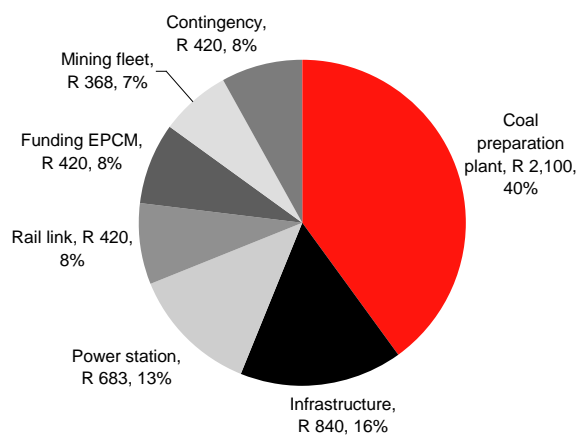
Source: Company data, Macquarie Research, November 2011

Fig 15 Capex profile (Rm) - Macquarie forecast



Source: Company data, Macquarie Research, November 2011

Fig 16 Capex breakdown (Rm)



Source: Company data, Macquarie Research, November 2011

Stage 1 is at a capital intensity of R1000/annual t of saleable product compared to R655/t for Exxaro's 14.6mtpa R9bn brownfield expansion at Grootegeluk for the Medupi PS and the R685/t Coal of Africa (CZA SJ, R6.55, Outperform, TP: R16.50) is spending on the Vele project.

At 30 September 2011 the company had a cash balance of A\$24m (R192m) and plans to fund Boikarabelo Stage 1 through a mix of project finance (60%) and ResGen equity (40%) - to avoid unnecessary complexities around the pricing of an equity issue we have assumed the capex is fully debt funded.

While a number of institutions have provided the company with preliminary offers for the project financing, the funding is conditional on:

- ⇒ ResGen securing a rail haulage contract with TFR, and
- ⇒ ResGen agreeing a supply contract with Eskom.

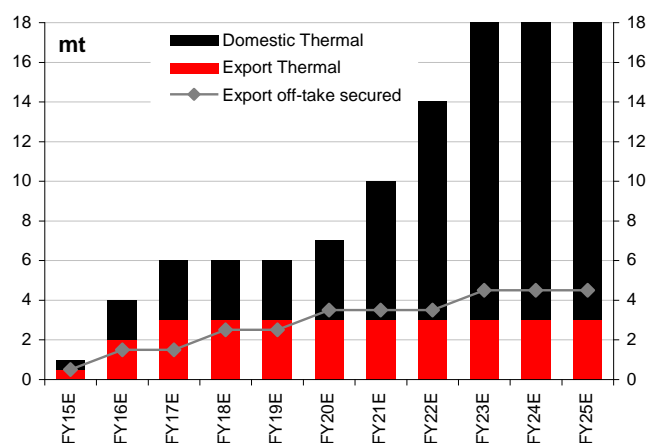
Any delay in the meeting of these conditions will delay the flow of funds and hence the start-up of the mine.

Cornerstone off-take agreements in place - but only for exports

ResGen has secured off-take agreements for the majority of its forecast export coal production with two Indian buyers:

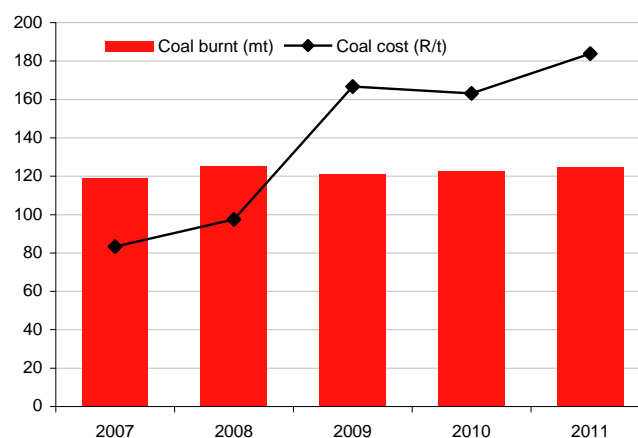
- ⇒ **Integrated Coal Mining Limited (ICML)** - part of India's RPG Group and a 7% shareholder in ResGen, has committed to take 139mt of export coal for delivery over a period of 38 years, split as follows:
 - Stage 1: 1mtpa for the first 3 years and 2mtpa for a further 35 years (73mt in total).
 - Stage 2: 1mtpa for the first 3 years and 2mtpa for a further 32 years (67mt in total). We, however, only model domestic power generation coal for stage 2.
- ⇒ **Bhushan Steel** – this Indian steelmaker has committed to purchase 0.5mtpa of export coal for the first 5 years of the mine's operation and a minimum of 0.5mtpa for a further 15 years.

Fig 17 Export contracts in place



Source: Company data, Macquarie Research, November 2011

Fig 18 Eskom's coal now costing almost R200/t



Source: Department of Public Enterprises, Eskom, Macquarie Research, November 2011

The pricing of the export thermal coal will be linked to the international market prices at the time of shipment (eg. the Richards Bay API#4 price).

ResGen is focussed on securing a supply agreement with Eskom for the 3mtpa of domestic thermal coal to be produced from Stage 1. This coal would primarily have to be for Eskom's Mpumalanga PSs as Exxaro has long term contracts in place to supply Eskom's two Waterberg PSs - Matimba (operating) and Medupi (currently under construction). While the majority of Eskom's coal-fired PSs are located in Mpumalanga, and are largely supplied from dedicated mines in the Witbank/Highveld/Ermelo coalfields, the PS useful life is likely to extend beyond the lives of the current supplying mines and as a result Eskom will most likely have to source coal from the next big coal province - the Waterberg.

As a result Eskom is undertaking discussions with various potential coal suppliers from the Waterberg including with ResGen for Boikarabelo and indeed project financing for it is dependent on securing a domestic supply agreement of this nature with Eskom.

While up to recently Eskom has been paying an average of <R100/t for the ~ 125mtpa that it consumes, Eskom's increased requirements (which have to be covered under new more "commercial" contracts as opposed to cost-plus type contracts), the need for better/more consistent quality (which implies buying from bigger, more robust, suppliers), mining inflation, higher transport costs (coal is being road-hauled/railed significant distances) and competition with coal export economics, means that Eskom's coal cost has risen to close to R200/t. Indeed the latest big coal supply contract that Eskom has entered into is for 14.6mtpa of coal from Exxaro for the Medupi PS, and the coal price on this contract, being based, we believe, on a ~25% return on invested capital, is ~R250/t.

Apart from Eskom there are likely to be a number of Independent Power Producers (IPPs) emerging in the next few years which will also require coal supply and indeed CESC, also part of the RPG Group and the third largest Indian power utility, plans to undertake a feasibility study into constructing a 1320MW PS adjacent to ResGen's Boikarabelo mine. This could potentially secure a customer for a major portion of the domestic thermal coal from Stage 2.

Infrastructure is THE key risk

While ResGen has a good handle on its coal resource and project/mine planning, as well as having a contract in place for the export coal and being in discussions for off-take for its domestic coal, there are a number of infrastructure-related issues the resolution of which will determine when and exactly how ResGen will get Boikarabelo into operation.

The main risks are:

- ⇒ **Power** - electricity supply in SA is constrained and thus getting power for a new (and relatively remote) mining/coal washing operation is not easy.
- ⇒ **Water** - paradoxically, given its name, the Waterberg does not have an abundance of water and significant capex needs to be spent (public and private) on new water supply to support the many mining developments that are planned in the area.
- ⇒ **Rail/Port** - the Waterberg does not have adequate rail infrastructure/capacity to get coal either to the export market or to the Mpumalanga area to supply existing Eskom power stations.

Power - Trying not to be at the mercy of Eskom

While power for the construction of the Boikarabelo mine and plant will be sourced from the existing Eskom supply to the property, electricity for steady-state Stage 1 operations is planned to be sourced from a 40MW power station which ResGen plans to construct as part of Stage 1.

ResGen will be releasing tenders shortly for the construction and operation of the power station.

As mentioned earlier, CESC is investigating the feasibility of developing a 1320MW power station in the vicinity of Boikarabelo. This highlights CESC's interest in bringing forward the development of Stage 2 and securing the additional export coal off-take. If there was no additional export coal to secure, CESC would probably not proceed with the development of the power station.

Water – Long-term plan underway

The beneficiation (washing) of coal requires significant volumes of water and thus, with the Waterberg being a water-scarce area, securing adequate water supply is a key element of the Boikarabelo project.

The greater Waterberg's current water requirements are met by the Mokolo dam, on the Mokolo River, which supplies Exxaro's Grootegeluk Mine, the Matimba PS and the town of Lephalale. According to the Department of Water Affairs (DWA), the Waterberg's long term water supply will be met by the Mokolo and Crocodile River Water Augmentation Project (MCWAP) - MCWAP Phase 1 is expected to supply ~30.5mm³ pa with MCWAP Phase 2 adding an additional 110mm³ pa. The DWA current planning, however, only allows for the confirmed requirements for the Matimba PS, the Medupi PS, the Grootegeluk Mine and the town of Lephalale and therefore focuses on development of MCWAP1 only.

While ResGen management is confident that underground (ie. borehole) water is sufficient to support the 2.9mm³pa Stage 1 water requirement, and has based the initial IWUL (Integrated Water Use Licence) application thereon, the company's long-term water solution involves the development of an effluent water treatment plant at Marapong, just outside Lephalale. This will supply sufficient water to meet Boikarabelo Stage 2 requirements and supply the Marapong community with additional water. A separate IWUL application is currently being developed for this project.

Rail – The ultimate lifeline

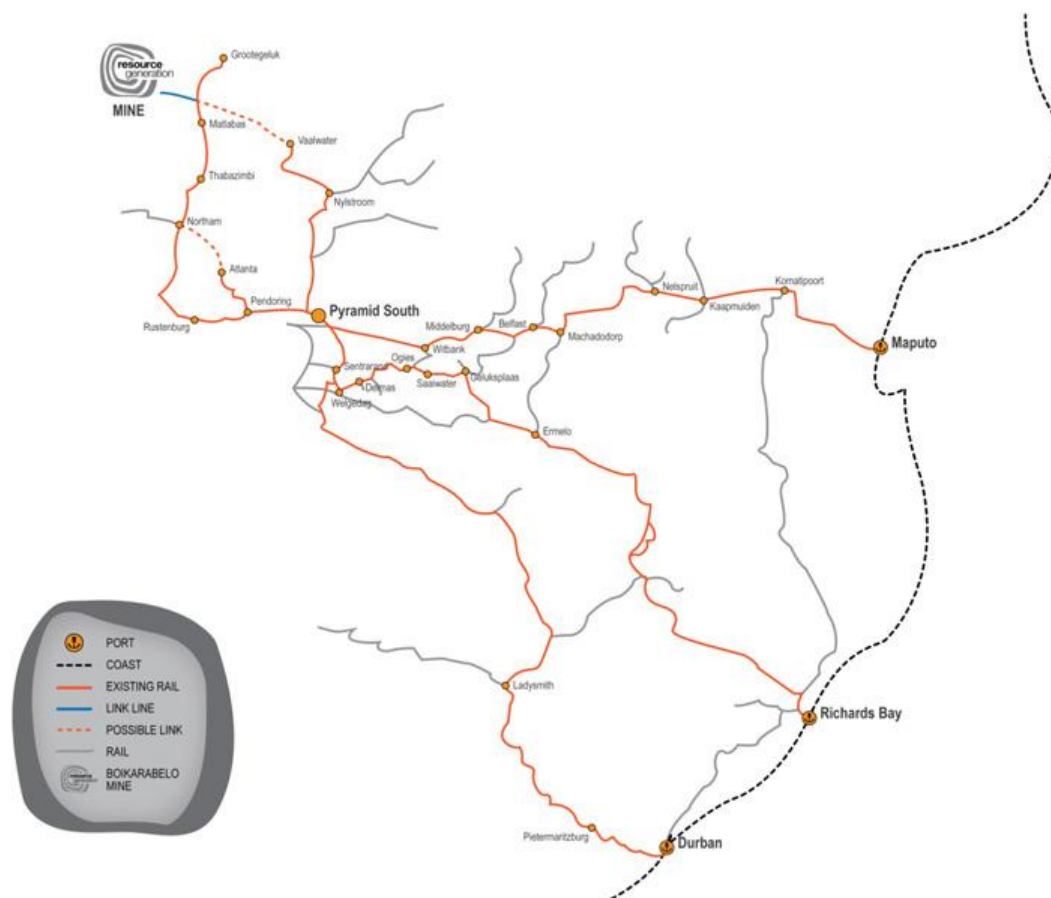
On current planning, all of ResGen's Stage 1 saleable production needs to be transported by rail transport to customers, with the export coal needing to reach one of the east coast ports (Maputo, Richards Bay and/or Durban) and the Eskom coal requiring transport into the Mpumalanga area.

Fundamentally, to initially plug-in to the Transnet Freight Rail (TFR) network, ResGen needs to build a 36km rail link from the Boikarabelo mine site to the rail line that runs from Lephalale (Grootegeluk). The company has budgeted R416m for this link and has already secured the various surface rights/servitudes on the land on which the link will be run. In time, ownership of the link will be transferred to TFR as a common user facility.

This, however, is the easy part.

While current capacity on the Lephalale line to the Pyramid South major railhead north of Pretoria – from which trains can be directed to Maputo for export, Richards Bay for export, Durban for export or Mpumalanga for Eskom supply – is, we believe, 4-5mtpa, only <1mtpa of coal is actually railed. One of the key constraints on the line is that it is not fully electrified and different segments of the line use different locomotives, the consequence being the changeover of locomotives (from diesel to AC to DC, etc) along various sections is highly inefficient. While capacity could be increased through additional loops, wagons and locomotives, the consistent electrification of the entire line is a pre-requisite to any significant increased railing capacity (eg. to support Stage 2 production levels).

Fig 19 Various rail routes to market – but investment needed



Source: Company data, November 2011

While there are a number of potential routes from Boikarabelo to Pyramid South, some of which require new rail links (ie. Matlabas/Vaalwater or Northam/Atlanta), the simultaneous upgrading of the line to be able to carry 26t/axle as opposed to the current 20t/axle would according to ResGen, result in capacity to rail 46mtpa from the Waterberg.

Transnet/TFR continue to make sweeping statements about improving the infrastructure from the Waterberg – and is apparently in the process of completing a Feasibility Study – but it is not yet clear when decisions will be made on this, how much it will cost and how the capacity will be funded. While TFR has noted that it is examining the possibility of a new heavy-haul line from the Waterberg, it seems the current plan is to increase capacity on the existing line, through phased upgrades, before investing in a completely new, heavy-haul line.

ResGen has, however, been having ongoing discussions with TFR and on 26 October 2011, the parties (actually the Ledjadja JV, on behalf of ResGen) signed an MoU which provides for ResGen to get 4mt of rail capacity for FY15E (July 2014-June 2015), 5mt for FY16E and 6mt for FY17E. The railed tonnage will be split 50/50 between coal railed to export ports and coal railed to Mpumalanga.

The haulage agreement is, however, subject to various conditions, the key ones of which are:

- ⇒ TFR completing its Waterberg Feasibility Study;
- ⇒ The completion of the requisite rail upgrades and rail links (all of which will be common- user);
- ⇒ Boikarabelo starting production; and
- ⇒ Formal allocation of capacity by TFR.

So, while the signing of the MoU is a step in the right direction, this is ONLY an MoU and we see sufficient rail capacity out of the Waterberg as being still far from being a *fait accompli*.

While it currently costs ~R115/t to rail coal from Mpumalanga to the RBCT, we estimate that rail from the Waterberg to RBCT will cost ~R260/t. In addition to port charges of R20/t, a non-RBCT shareholder such as ResGen would also have to lease export allocation at RBCT at about 10% of the export coal price (about US\$10/t or R80/t at present). All-in exports via RBCT would therefore cost almost R360/t (US\$45/t) in total rail/port costs in addition to the FOR cost at the mine.

Other export routes are of course possible, with Grindrod (GND SJ, R15.03, Outperform, TP: R16.30) investigating the expansion of its Matola (Maputo) terminal capacity from the current 6mtpa to 30mtpa and its Richards Bay dry bulk facility from 2mtpa to 10mtpa. It is unlikely, however, that total rail/port costs would be much different that the RBCT route.

Regulatory risks – Following due process

A number of cases in the past few years have highlighted the importance of making sure that all of the regulatory boxes are ticked prior to project development. Issues with prospecting/mining rights (ref. the Sishen debacle) and water use licences as well as environmental issues (ref. Coal of Africa's problems at Vele) have been brought to the fore.

Black Economic Empowerment (BEE)

ResGen's Waterberg holdings are sufficiently empowered via the Fairy Wing Trading 136 26% holding in the Ledjadja JV and the Lukale Mining 30% holding in the Waterberg One JV. Fairy Wing Trading 136 is owned by a group of South African businessmen and women with strong commercial and government relationships, while the major shareholders in Lukale Mining are Umnotho weSizwe Group (30%), African Crest Resources (26%) and Crystal Ball Properties (26%).

There are no local communities in close proximity to the mine so there are limited broad-based empowerment opportunities.

Mining and Surface Rights

In April 2011 Ledjadja was awarded a 30-year mining right for Boikarabelo, which covers all the mining tenements held within Ledjadja, including the Witkopje, Draai Om, Kalkpan, Osorno, Zeekoevley, Vischpan and Kruishout properties. An appeal has been lodged against the award, but the objections raised are similar in nature to those lodged by the same parties during the initial consultation phase of the mining right application and management are therefore confident the mining right award will be confirmed.

ResGen holds the surface rights over all the properties on which mining will take place. In addition, the company has secured various surface rights and servitudes to ensure the most appropriate and efficient routing of the rail link.

Environmental Approvals

The mine's environmental impact assessment (EIA) process was undertaken in accordance with the terms of the Mineral and Petroleum Resources Development Act of 2002 (MPRDA) and the National Environmental Management Act (NEMA).

As part of the award of the Mining Right in April 2011, the project has had its Environmental Management Plan (EMP) approved by the DMR. In addition, and in accordance with the NEMA, Ledjadja submitted an application for construction of the mine and the rail link in January 2011. While the public consultation and administrative reviews were completed without major issues, minor changes to the rail link routing have required the completion of a revised EIA.

Management is confident that approval of the revised EIA will be forthcoming.

Water Use Licence

An IWUL from the DWA is required to lawfully conduct all water use and water disposal activities in and around the mine. As mentioned earlier, ResGen plans to use underground (borehole) water in Stage 1 and, on this basis, submitted its IWUL application in December 2010. The DWA is currently assessing the application.

An IWUL application is in the process of being prepared in respect of the development of an effluent water treatment scheme at Marapong to supply the mine for Stage 2 as well as supply the Marapong community.

Valuation & Recommendation

We initiate coverage on ResGen with an Outperform recommendation based on our 12-month (DCF-based) target price of A\$0.75 (R6.00)/share. The stock thus offers ~60% upside from current levels.

Only valuing Boikarabelo

While ResGen has significant coal acreage beyond that being developed for Boikarabelo (ie. Waterberg One), we do not attribute any value to the Waterberg One tenements. The Waterberg No 1 property, contiguous to Boikarabelo, could potentially significantly increase the size of the Boikarabelo project. In addition, we place no value on the uranium tenements in Cameroon, given the absence of any significant exploration on these properties.

Some of our key assumptions in respect of Boikarabelo are listed in the table below.

Fig 20 Key assumptions on Boikarabelo

Parameter	Units	Stage 1	Stage 2
Timeline			
Initial production	FY	2015	2020
Full production	FY	2017	2023
Capital			
Capital cost	Rbn	6,000	4,000
Capital intensity	R/annual t	1,000	333
Funding			
		100% debt	100% Internal cash
Volumes			
ROM production	kt	12,000	24,000
Saleable production	kt	6,000	12,000
- Export thermal coal	kt	3,000	0
- Domestic thermal coal	kt	3,000	12,000
Operating costs			
FOR Mine / Eskom cost	R/t	120	120
Rail	R/t	260	260
Port	R/t	20	20
RBCT entitlement leasing charge	R/t	78	78
Total	R/t	478	478
Coal prices			
Long-term export thermal coal	US\$/t	80	80
Long-term domestic thermal coal	R/t	250	250
Exchange rates			
Long-term R/US\$		10.33	10.33
Long-term US\$/A\$		0.82	0.82

Source: Company data, Macquarie Research, November 2011

We calculate a weighted-average cost of capital (WACC) for ResGen of 13.9%, based on:

- ⇒ Risk-Free Rate = 8%;
- ⇒ Market Risk Premium = 6%
- ⇒ Beta = 1.3.
- ⇒ Thus **Cost of Equity** = 15.8%
- ⇒ Cost of Debt = 9.0%
- ⇒ Tax Rate = 28%
- ⇒ **Cost of Debt (after tax)** = 6.5%
- ⇒ Debt/Equity = 25%/75%
- ⇒ **WACC = 13.9%**

We model both stages of Boikarabelo explicitly to FY40E only and thus do not incorporate a terminal value.

On this basis, we get an NPV of A\$114m for Stage 1 and A\$122m for Stage 2. Applying the bull case for Stage 2 (including an export thermal coal fraction at a 15% yield) we get an NPV of A\$233m.

Conservative assumptions but still risk adjusting NPVs

While we believe that we have used relatively conservative assumptions in reaching our valuations for Boikarabelo Stage 1 & 2 we acknowledge the significant risks inherent in this project particularly in terms of infrastructure.

As a result, we have discounted our Boikarabelo Stage 1 valuation by 25% to A\$85m, and Stage 2 by 50% to A\$61m. The key triggers for removing these discounts in due course will be more definitive commitments from both Eskom and TFR in respect of coal off-take and rail capacity, respectively.

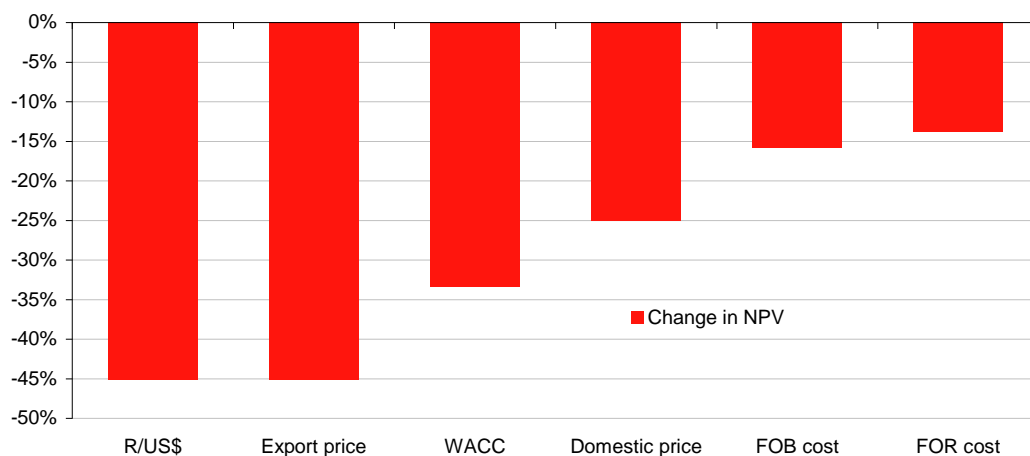
Fig 21 Valuation breakdown

	Units	Stage 1	Stage 2	Total
Total NPV	A\$m	154	165	318
ResGen interest	%	74%	74%	74%
Attributable to ResGen	A\$m	114	122	236
Risk adjustment	%	25%	50%	38%
Risk adjusted NPV	A\$m	85	61	146
Net cash/(debt)	A\$m			24
Equity value	A\$m			170
Issued shares	m			258
Equity value	A\$/sh			0.66

Source: Company data, Macquarie Research, November 2011

Valuation is most sensitive to changes in the export price received

Fig 22 % change in NPV based on 10% change in assumptions



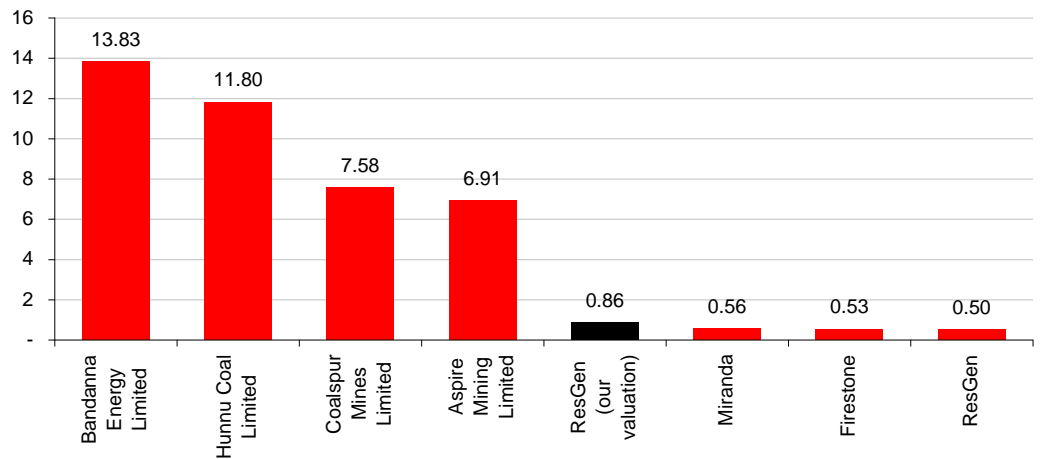
Source: Company data, Macquarie Research, November 2011

The valuation is particularly sensitive to changes in the price received for its export coal with changes in the R/US\$ or the export price (eg. Richards Bay API#4 price) having the greatest impact on value. This is due to the export coal production being significantly more profitable than the domestic thermal coal. The valuation is less sensitive to changes in costing due to the low mining cost associated with the project.

ResGen looks cheap compared to peers

When we compare ResGen's EV/Resource t to a group of listed Australian and South Africa coal exploration companies, ResGen appears to be the cheapest at R0.50/Resource t.

Fig 23 Peer explorer comparison (EV/resource t) – R/t

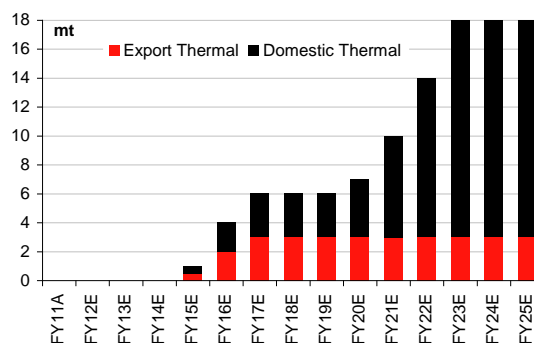


Source: Company data, Macquarie Research, November 2011

ResGen's closest comparator is Firestone Energy in that it is at a similar stage of development in the Waterberg coalfield and is also listed in Australia, and ResGen is trading at a small discount to it.

Fig 24 Financials

Resource Generation (RES AU / RSG SJ)						Share price:	0.47
						Target price:	0.75
Profit and loss							
		FY11A	FY12E	FY13E	FY14E	FY15E	
Sales	A\$m	0	0	0	0	62	
Production costs	A\$m	1	0	0	0	40	
EBITDA	A\$m	(1)	0	0	0	22	
Depreciation and amortisation	A\$m	0	0	0	0	22	
Other income/(expenses)	A\$m	(6)	(4)	(5)	(5)	(6)	
EBIT	A\$m	(6)	(4)	(5)	(5)	(6)	
Net interest income/(expense)	A\$m	1	0	0	(10)	(30)	
Profit before tax	A\$m	(5)	(3)	(5)	(15)	(36)	
Taxation	A\$m	0	1	1	4	10	
Profit after tax	A\$m	(5)	(2)	(4)	(11)	(26)	
Non-controlling interests	A\$m	0	(1)	(1)	(3)	(7)	
Reported Net Profit	A\$m	(5)	(2)	(3)	(8)	(19)	
Profit growth	A\$m	55%	-66%	54%	203%	133%	
Effective tax rate	%	0%	28%	28%	28%	28%	
EPS adjusted	A\$c	(2)	(1)	(1)	(3)	(7)	
EPS growth	%	10%	-71%	54%	203%	133%	
DPS	A\$c	0	0	0	0	0	
Cash Flow							
		FY11A	FY12E	FY13E	FY14E	FY15E	
Cash generated from operations	A\$m	(2)	(2)	(2)	(2)	15	
Net interest	A\$m	1	0	0	(10)	(30)	
Tax paid	A\$m	(0)	(1)	(1)	(4)	(10)	
Dividends paid	A\$m	0	0	0	0	0	
Operating cash flow	A\$m	(2)	(2)	(3)	(16)	(24)	
Capital expenditure	A\$m	(9)	(1)	(201)	(385)	(66)	
Investing cash flow	A\$m	(385)	(66)	(19)	(170)	(142)	
Debt drawdown/(repayment)	A\$m	0	0	200	400	200	
Equity financing & other	A\$m	42	(2)	(2)	0	0	
Financing cash flow	A\$m	42	(2)	198	400	200	
Net cash flow	A\$m	20	(5)	(5)	(2)	109	
Free cash flow	A\$m	(12)	(4)	(204)	(402)	(91)	
Balance Sheet							
		FY11A	FY12E	FY13E	FY14E	FY15E	
Cash	A\$m	25	20	15	13	123	
Current assets	A\$m	26	20	15	17	152	
Fixed assets	A\$m	102	105	306	691	735	
Other assets	A\$m	11	13	14	14	14	
Total assets	A\$m	140	138	334	722	901	
Current liabilities	A\$m	1	1	1	0	5	
Total liabilities	A\$m	5	6	206	605	810	
Non-controlling interests	A\$m	0	(1)	(2)	(4)	(11)	
Shareholder equity	A\$m	134	132	128	117	92	
Total debt	A\$m	1	1	201	601	801	
Net debt/(cash)	A\$m	(24)	(19)	186	588	678	
Working capital	A\$m	0	0	0	0	4	
Average weighted shares	000's	216,510	257,896	257,896	257,896	257,896	
Production							
		FY11A	FY12E	FY13E	FY14E	FY15E	
Coal production							
Saleable production	mt	0.0	0.0	0.0	0.0	1.0	
Export	mt	0.0	0.0	0.0	0.0	0.5	
Eskom	mt	0.0	0.0	0.0	0.0	0.5	
Key assumptions							
		FY11A	FY12E	FY13E	FY14E	FY15E	
SA Richards Bay FOB	US\$/t	108.28	120.63	106.88	93.50	90.75	
ZAR/US\$		7.03	7.41	8.37	8.89	9.28	
Ratio analysis							
		FY11A	FY12E	FY13E	FY14E	FY15E	
EBITDA margin	%	-4260%	N/A	N/A	N/A	35%	
Operating margin	%	-41853%	N/A	N/A	N/A	-9%	
Price Earnings	x	N/A	N/A	N/A	N/A	N/A	
Dividend Yield	%	0%	0%	0%	0%	0%	
EV/EBITDA	x	0	N/A	N/A	N/A	36	
ROE	%	-4%	-1%	-2%	-7%	-21%	
ROA	%	-4%	-1%	-1%	-1%	-2%	
Gearing (debt/equity)	%	1%	1%	157%	513%	874%	
Sensitivities							
Goal pricing							
		-10%	-5%	Base case	+5%	+10%	
Valuation		0.66	0.66	0.66	0.66	0.66	
Discount rate							
		11.9%	12.9%	Base case	14.9%	15.9%	
Valuation		1.14	0.88	0.66	0.48	0.33	



Source: Company data, Macquarie Research, November 2011

Appendix 1 – The Thermal Coal Market

Provided by Macquarie Commodity Analyst Hayden Atkins

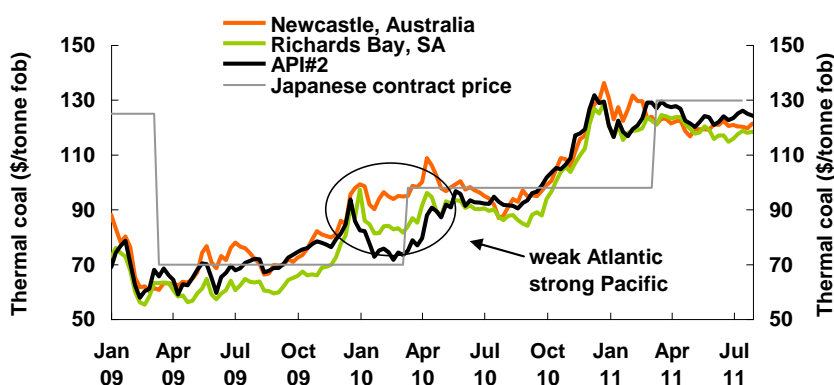
Good reasons for winter strength despite macro concerns

Thermal coal pricing has been very steady against broader macro turmoil. We were initially expecting some weakness in Q3, especially given index pricing wasn't competitive into China. But this doesn't seem to have mattered too much, with China managing to import its coal from Australian and Indonesia well below Newcastle benchmark prices. European prices also managed to hold their ground, given the good spreads offered in power markets on burning coal into the winter.

Turning into the end of the year, the market looks tight, despite the macroeconomic fears currently engulfing markets. The China market in particular looks like it will underpin strong prices for the rest of the market, given the tightness seen there. This isn't driven so much by strengthening power demand, which is likely to slow along with industrial production. Rather, the big issue is the large drop in hydro generation availability, which has fallen 20% YoY in August and is tracking at 2009 levels. This is putting a huge amount of pressure on coal burn, right when IPPs will be looking to build stock into the winter.

Chinese power supply issues should underpin a strong coal burn through winter

Fig 25 Pricing has been extremely steady; 1H10 provides the template for a weak Atlantic/strong Pacific market



Source: sxcoal, globalCOAL, Macquarie Research, November 2011

Demand in the rest of the world has much less room to fall than 2008/09

Demand in the rest of the world may be seen as more shaky, especially in Europe, which is the epicentre of global growth concerns. While we are not discounting the potential for further weakness in industrial activity and power demand, the loss of nuclear generation capacity in Germany and the unavailability of solar generation in winter means that coal demand is going to be stronger in that country heading into the end of the year. Stocks across the region in general are not particularly high, so it seems like there is a lot less room to move in the event of a recession than there was in 2008/09. A similar case can be made for Japan, where coal burn looks unable to fall, given the loss of nuclear capacity.

We also have a template for what the market will look like if European demand is weak and Pacific markets remain robust. This is precisely the situation in 1H10, where the difference between European pricing and Newcastle spot prices was huge (as shown in the chart above). The effect of this was to shift coal out of the Atlantic from suppliers in Colombia and South Africa into Pacific markets. This didn't undermine Pacific prices, which held strong through this period.

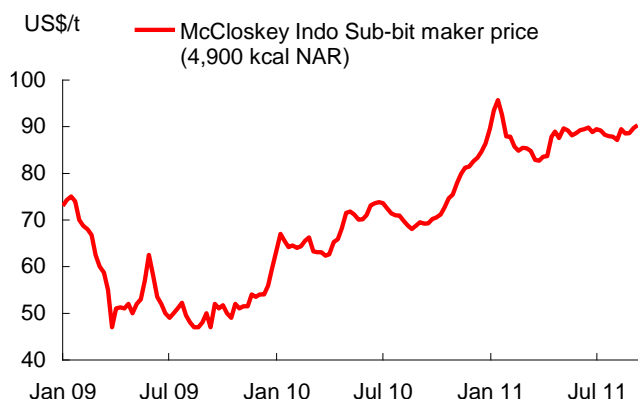
These factors should ensure that thermal coal remains very defensive in the current macro-driven uncertainty, particularly into the early stages of next year. To be sure, it seems that demand would have to take an incredibly drastic turn for the worse to undermine prices. While the risk of that is not zero, it seems unlikely that we will see the 2008 type of event that is needed to undermine the robust outlook for thermal coal.

Fig 26 Seaborne Thermal Coal Demand and Supply

	2007	2008	2009	2010F	2011F	2012F	2013F	2014F	2015F	2016F
Demand (mt)										
Atlantic	225	225	201	181	197	199	207	208	209	211
China	40	35	80	114	120	125	125	130	135	150
India	35	36	60	75	92	111	123	132	148	155
Other Pacific	306	316	312	343	348	364	387	406	418	427
Total Demand	607	612	653	713	757	799	842	875	910	942
% change	3.3%	0.9%	6.6%	9.2%	6.1%	5.6%	5.4%	4.0%	4.0%	3.5%
Supply (mt)										
Australia	112	126	139	141	143	163	184	202	216	245
Indonesia	195	200	233	284	310	326	338	356	377	392
China	45	36	18	14	14	14	14	14	14	14
South Africa	66	62	65	69	69	71	74	80	80	81
Russia	72	72	82	85	82	86	88	88	88	90
Colombia	65	69	63	70	77	81	84	88	99	109
Other	51	48	52	50	61	56	54	53	55	57
Total Supply	607	612	653	713	755	797	836	880	929	988
% change	3.3%	0.9%	6.6%	9.2%	6.0%	5.6%	4.8%	5.3%	5.5%	6.3%
Notional Balance	-	-	-	-	-1	-1	-6	5	19	46

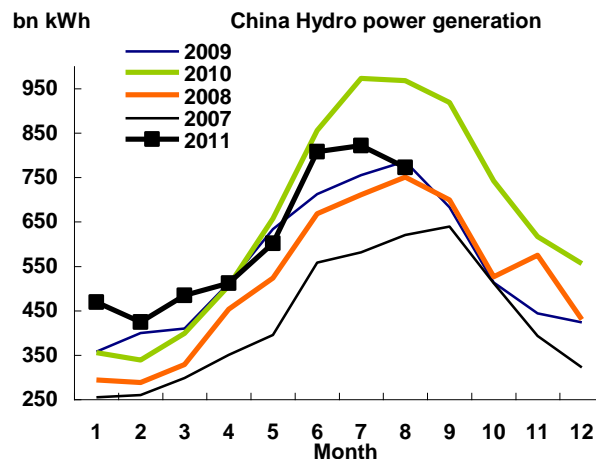
Source: GTIS, Macquarie Research, November 2011

Fig 27 Indonesian sub-bit prices are firming with increasing Chinese interest



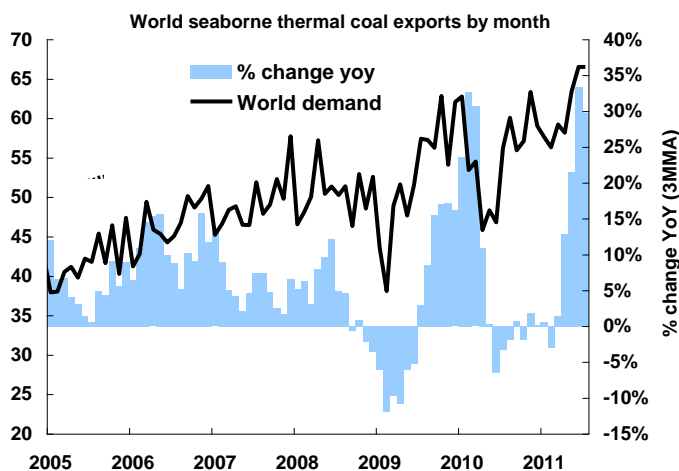
Source: GTIS, Macquarie Research, November 2011

Fig 28 Chinese hydro generation is falling away sharply



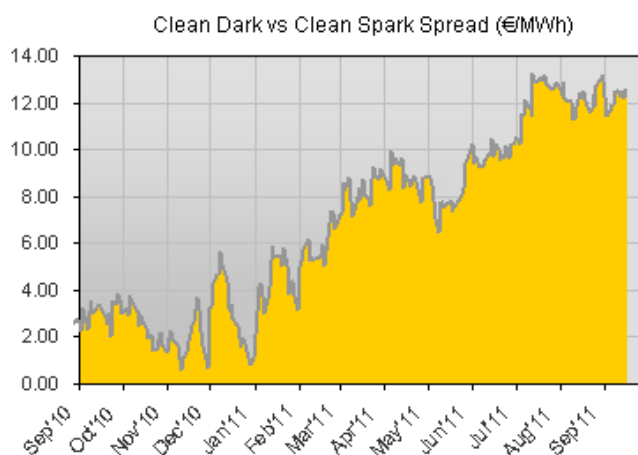
Source: globalCOAL, Macquarie Research, November 2011

Fig 29 Seaborne supply bounces back as Indo recovers from rains



Source: sxcoal, Macquarie Research, November 2011

Fig 30 Dark spreads on Cal'12 still look inviting for generators



Source: McCloskey, globalCOAL Macquarie Research, November 2011

Important disclosures:

Recommendation definitions

Macquarie - Australia/New Zealand

Outperform – return >3% in excess of benchmark return
Neutral – return within 3% of benchmark return
Underperform – return >3% below benchmark return

Benchmark return is determined by long term nominal GDP growth plus 12 month forward market dividend yield

Macquarie – Asia/Europe

Outperform – expected return >+10%
Neutral – expected return from -10% to +10%
Underperform – expected return <-10%

Macquarie First South - South Africa

Outperform – expected return >+10%
Neutral – expected return from -10% to +10%
Underperform – expected return <-10%

Macquarie - Canada

Outperform – return >5% in excess of benchmark return
Neutral – return within 5% of benchmark return
Underperform – return >5% below benchmark return

Macquarie - USA

Outperform (Buy) – return >5% in excess of Russell 3000 index return
Neutral (Hold) – return within 5% of Russell 3000 index return
Underperform (Sell) – return >5% below Russell 3000 index return

Volatility index definition*

This is calculated from the volatility of historical price movements.

Very high-highest risk – Stock should be expected to move up or down 60–100% in a year – investors should be aware this stock is highly speculative.

High – stock should be expected to move up or down at least 40–60% in a year – investors should be aware this stock could be speculative.

Medium – stock should be expected to move up or down at least 30–40% in a year.

Low-medium – stock should be expected to move up or down at least 25–30% in a year.

Low – stock should be expected to move up or down at least 15–25% in a year.

* Applicable to Australian/NZ/Canada stocks only

Recommendations – 12 months

Note: Quant recommendations may differ from Fundamental Analyst recommendations

Financial definitions

All "Adjusted" data items have had the following adjustments made:

Added back: goodwill amortisation, provision for catastrophe reserves, IFRS derivatives & hedging, IFRS impairments & IFRS interest expense
Excluded: non recurring items, asset revals, property revals, appraisal value uplift, preference dividends & minority interests

EPS = adjusted net profit / epowa*

ROA = adjusted ebit / average total assets

ROA Banks/Insurance = adjusted net profit / average total assets

ROE = adjusted net profit / average shareholders funds

Gross cashflow = adjusted net profit + depreciation

*equivalent fully paid ordinary weighted average number of shares

All Reported numbers for Australian/NZ listed stocks are modelled under IFRS (International Financial Reporting Standards).

Recommendation proportions – For quarter ending 30 September 2011

	AU/NZ	Asia	RSA	USA	CA	EUR	
Outperform	57.35%	65.88%	56.94%	46.54%	74.68%	47.85%	(for US coverage by MCUSA, 11.63% of stocks covered are investment banking clients)
Neutral	31.99%	20.68%	31.94%	50.00%	23.42%	34.66%	(for US coverage by MCUSA, 9.30% of stocks covered are investment banking clients)
Underperform	10.66%	13.45%	11.11%	3.46%	1.90%	17.49%	(for US coverage by MCUSA, 0.47% of stocks covered are investment banking clients)

Company Specific Disclosures:

Macquarie and its affiliates collectively and beneficially own or control 1% or more of any class of Exxaro Resources Ltd's equity securities. The Macquarie Group acted as financial advisor to ArcelorMittal in relation to its investment in Macarthur Coal as announced on 21 May 2008. Macquarie First South Advisers (Pty) Limited is acting as Sponsor to Coal of Africa Ltd on the Johannesburg Stock Exchange. Within the last 12 months, Macquarie Group has received compensation for investment advisory services from Coal of Africa Ltd. The analyst and/or associated parties own or have other interests in securities issued by Coal of Africa Ltd.

.Important disclosure information regarding the subject companies covered in this report is available at www.macquarie.com/disclosures.

Analyst Certification:

The views expressed in this research accurately reflect the personal views of the analyst(s) about the subject securities or issuers and no part of the compensation of the analyst(s) was, is, or will be directly or indirectly related to the inclusion of specific recommendations or views in this research. The analyst principally responsible for the preparation of this research receives compensation based on overall revenues of Macquarie Group Ltd ABN 94 122 169 279 (AFSL No. 318062) (MGL) and its related entities (the Macquarie Group) and has taken reasonable care to achieve and maintain independence and objectivity in making any recommendations.

General Disclaimers:

Macquarie Securities (Australia) Ltd; Macquarie Capital (Europe) Ltd; Macquarie Capital Markets Canada Ltd; Macquarie Capital Markets North America Ltd; Macquarie Capital (USA) Inc; Macquarie Capital Securities Ltd and its Taiwan branch; Macquarie Capital Securities (Singapore) Pte Ltd; Macquarie Securities (NZ) Ltd; Macquarie First South Securities (Pty) Limited; Macquarie Capital Securities (India) Pvt Ltd; Macquarie Capital Securities (Malaysia) Sdn Bhd; Macquarie Securities Korea Limited and Macquarie Securities (Thailand) Ltd are not authorized deposit-taking institutions for the purposes of the Banking Act 1959 (Commonwealth of Australia), and their obligations do not represent deposits or other liabilities of Macquarie Bank Limited ABN 46 008 583 542 (MBL) or MGL. MBL does not guarantee or otherwise provide assurance in respect of the obligations of any of the above mentioned entities. MGL provides a guarantee to the Monetary Authority of Singapore in respect of the obligations and liabilities of Macquarie Capital Securities (Singapore) Pte Ltd for up to SGD 35 million. This research has been prepared for the general use of the wholesale clients of the Macquarie Group and must not be copied, either in whole or in part, or distributed to any other person. If you are not the intended recipient you must not use or disclose the information in this research in any way. If you received it in error, please tell us immediately by return e-mail and delete the document. We do not guarantee the integrity of any e-mails or attached files and are not responsible for any changes made to them by any other person. MGL has established and implemented a conflicts policy at group level (which may be revised and updated from time to time) (the "Conflicts Policy") pursuant to regulatory requirements (including the FSA Rules) which sets out how we must seek to identify and manage all material conflicts of interest. Nothing in this research shall be construed as a solicitation to buy or sell any security or product, or to engage in or refrain from engaging in any transaction. In preparing this research, we did not take into account your investment objectives, financial situation or particular needs. Macquarie salespeople, traders and other professionals may provide oral or written market commentary or trading strategies to our clients that reflect opinions which are contrary to the opinions expressed in this research. Macquarie Research produces a variety of research products including, but not limited to, fundamental analysis, macro-economic analysis, quantitative analysis, and trade ideas. Recommendations contained in one type of research product may differ from recommendations contained in other types of research, whether as a result of differing time horizons, methodologies, or otherwise. Before making an investment decision on the basis of this research, you need to consider, with or without the assistance of an adviser, whether the advice is appropriate in light of your particular investment needs, objectives and financial circumstances. There are risks involved in securities trading. The price of securities can and does fluctuate, and an individual security may even become valueless. International investors are reminded of the additional risks inherent in international investments, such as currency fluctuations and international stock market or economic conditions, which may adversely affect the value of the investment. This research is based on information obtained from sources believed to be reliable but we do not make any representation or warranty that it is accurate, complete or up to date. We accept no obligation to correct or update the information or opinions in it. Opinions expressed are subject to change without notice. No member of the Macquarie Group accepts any liability whatsoever for any direct, indirect, consequential or other loss arising from any use of this research and/or further communication in relation to this research. Clients should contact analysts at, and execute transactions through, a Macquarie Group entity in their home jurisdiction unless governing law permits otherwise. The date and timestamp for above share price and market cap is the closed price of the price date. Close Price is the final price at which the security is traded in the relevant exchange on the date indicated.

Country-Specific Disclaimers:

Australia: In Australia, research is issued and distributed by Macquarie Securities (Australia) Ltd (AFSL No. 238947), a participating organisation of the Australian Securities Exchange. **New Zealand:** In New Zealand, research is issued and distributed by Macquarie Securities (NZ) Ltd, a NZX Firm.

Canada: In Canada, research is prepared, approved and distributed by Macquarie Capital Markets Canada Ltd, a participating organisation of the Toronto Stock Exchange, TSX Venture Exchange & Montréal Exchange. Macquarie Capital Markets North America Ltd., which is a registered broker-

dealer and member of FINRA, accepts responsibility for the contents of reports issued by Macquarie Capital Markets Canada Ltd in the United States and sent to US persons. Any person wishing to effect transactions in the securities described in the reports issued by Macquarie Capital Markets Canada Ltd should do so with Macquarie Capital Markets North America Ltd. The Research Distribution Policy of Macquarie Capital Markets Canada Ltd is to allow all clients that are entitled to have equal access to our research. **United Kingdom:** In the United Kingdom, research is issued and distributed by Macquarie Capital (Europe) Ltd, which is authorised and regulated by the Financial Services Authority (No. 193905). **Germany:** In Germany, this research is issued and/or distributed by Macquarie Capital (Europe) Limited, Niederlassung Deutschland, which is authorised and regulated by the UK Financial Services Authority (No. 193905). and in Germany by BaFin. **France:** In France, research is issued and distributed by Macquarie Capital (Europe) Ltd, which is authorised and regulated in the United Kingdom by the Financial Services Authority (No. 193905). **Hong Kong & Mainland China:** In Hong Kong, research is issued and distributed by Macquarie Capital Securities Ltd, which is licensed and regulated by the Securities and Futures Commission. In Mainland China, Macquarie Securities (Australia) Limited Shanghai Representative Office only engages in non-business operational activities excluding issuing and distributing research. Only non-A share research is distributed into Mainland China by Macquarie Capital Securities Ltd. **Japan:** In Japan, research is issued and distributed by Macquarie Capital Securities (Japan) Limited, a member of the Tokyo Stock Exchange, Inc. and Osaka Securities Exchange Co. Ltd (Financial Instruments Firm, Kanto Financial Bureau (kin-sho) No. 231, a member of Japan Securities Dealers Association and Financial Futures Association of Japan and Japan Securities Investment Advisers Association). **India:** In India, research is issued and distributed by Macquarie Capital Securities (India) Pvt Ltd., 92, Level 9, 2 North Avenue, Maker Maxity, Bandra Kurla Complex, Bandra (East), Mumbai – 400 051, India, which is a SEBI registered Stock Broker having membership with National Stock Exchange of India Limited (INB231246738) and Bombay Stock Exchange Limited (INB011246734). **Malaysia:** In Malaysia, research is issued and distributed by Macquarie Capital Securities (Malaysia) Sdn. Bhd. (Company registration number: 463469-W) which is a Participating Organisation of Bursa Malaysia Berhad and a holder of Capital Markets Services License issued by the Securities Commission. **Taiwan:** Information on securities/instruments that are traded in Taiwan is distributed by Macquarie Capital Securities Ltd, Taiwan Branch, which is licensed and regulated by the Financial Supervisory Commission. No portion of the report may be reproduced or quoted by the press or any other person without authorisation from Macquarie. Nothing in this research shall be construed as a solicitation to buy or sell any security or product. **Thailand:** In Thailand, research is issued and distributed by Macquarie Securities (Thailand) Ltd, a licensed securities company that is authorized by the Ministry of Finance, regulated by the Securities and Exchange Commission of Thailand and is an exchange member no. 28 of the Stock Exchange of Thailand. The Thai Institute of Directors Association has disclosed the Corporate Governance Report of Thai Listed Companies made pursuant to the policy of the Securities and Exchange Commission of Thailand. Macquarie Securities (Thailand) Ltd does not endorse the result of the Corporate Governance Report of Thai Listed Companies but this Report can be accessed at: <http://www.thai-iod.com/en/publications.asp?type=4>. **South Korea:** In South Korea, unless otherwise stated, research is prepared, issued and distributed by Macquarie Securities Korea Limited, which is regulated by the Financial Supervisory Services. Information on analysts in MSKL is disclosed at <http://dis.kofia.or.kr/fs/dis2/fundMgr/DISFundMgrAnalystPop.jsp?companyCd2=A03053&pageDiv=02>. **South Africa:** In South Africa, research is issued and distributed by Macquarie First South Securities (Pty) Limited, a member of the JSE Limited. **Singapore:** In Singapore, research is issued and distributed by Macquarie Capital Securities (Singapore) Pte Ltd (Company Registration Number: 198702912C), a Capital Markets Services license holder under the Securities and Futures Act to deal in securities and provide custodial services in Singapore. Pursuant to the Financial Advisers (Amendment) Regulations 2005, Macquarie Capital Securities (Singapore) Pte Ltd is exempt from complying with sections 25, 27 and 36 of the Financial Advisers Act. All Singapore-based recipients of research produced by Macquarie Capital (Europe) Limited, Macquarie Capital Markets Canada Ltd, Macquarie First South Securities (Pty) Limited and Macquarie Capital (USA) Inc. represent and warrant that they are institutional investors as defined in the Securities and Futures Act. **United States:** In the United States, research is issued and distributed by Macquarie Capital (USA) Inc., which is a registered broker-dealer and member of FINRA. Macquarie Capital (USA) Inc, accepts responsibility for the content of each research report prepared by one of its non-US affiliates when the research report is distributed in the United States by Macquarie Capital (USA) Inc. Macquarie Capital (USA) Inc.'s affiliate's analysts are not registered as research analysts with FINRA, may not be associated persons of Macquarie Capital (USA) Inc., and therefore may not be subject to FINRA rule restrictions on communications with a subject company, public appearances, and trading securities held by a research analyst account. Any persons receiving this report directly from Macquarie Capital (USA) Inc. and wishing to effect a transaction in any security described herein should do so with Macquarie Capital (USA) Inc. Important disclosure information regarding the subject companies covered in this report is available at www.macquarie.com/research/disclosures, or contact your registered representative at 1-888-MAC-STOCK, or write to the Supervisory Analysts, Research Department, Macquarie Securities, 125 W.55th Street, New York, NY 10019.

© Macquarie Group

Auckland Tel: (649) 377 6433	Bangkok Tel: (662) 694 7999	Calgary Tel: (1 403) 218 6650	Denver Tel: (303) 952 2800	Frankfurt Tel: (069) 509 578 000	Geneva Tel: (41) 22 818 7777	Hong Kong Tel: (852) 2823 3588
Jakarta Tel: (62 21) 515 1818	Johannesburg Tel: (2711) 583 2000	Kuala Lumpur Tel: (60 3) 2059 8833	London Tel: (44 20) 3037 2000	Manila Tel: (63 2) 857 0888	Melbourne Tel: (613) 9635 8139	Montreal Tel: (1 514) 925 2850
Mumbai Tel: (91 22) 6653 3000	Munich Tel: (089) 2444 31800	New York Tel: (1 212) 231 2500	Paris Tel: (33 1) 7842 3823	Perth Tel: (618) 9224 0888	Seoul Tel: (82 2) 3705 8500	Shanghai Tel: (86 21) 6841 3355
Singapore Tel: (65) 6601 1111	Sydney Tel: (612) 8232 9555	Taipei Tel: (886 2) 2734 7500	Tokyo Tel: (81 3) 3512 7900	Toronto Tel: (1 416) 848 3500		

Available to clients on the world wide web at www.macquarieresearch.com and through Thomson Financial, FactSet, Reuters, Bloomberg, CapitalIQ and TheMarkets.com.



EMEA Research

Heads of Equity Research

John O'Connell (Global Co – Head)	(612) 8232 7544
David Rickards (Global Co – Head)	(612) 8237 1159
Julian Wentzel (Europe/South Africa)	(44 20) 3037 4274
George Brits (South Africa)	(2711) 583 2223

Consumer Staples

Food & Beverages

Julian Wentzel (Johannesburg)	(2711) 583 2202
Wynand van Zyl (Johannesburg)	(2711) 583 2323
Sreedhar Mahamkali (London)	(44 20) 3037 4016
Vincent Hamel (Paris)	(33 1) 5652 5491

Consumer Discretionary

Retailing

Julian Wentzel (Johannesburg)	(2711) 583 2202
Stephen Carrott (Johannesburg)	(2711) 583 2211
Sreedhar Mahamkali (London)	(44 20) 3037 4016
Rebecca Lay (London)	(44 20) 3037 4468
Robert Joyce (London)	(44 20) 3037 4355
Vincent Hamel (Paris)	(33 1) 5652 5491

Energy

Jason Gammel (Global)	(44 20) 3037 4085
David Farrell (London)	(44 20) 3037 4465
Mark Wilson (London)	(44 20) 3037 4466
Marc Kofler (London)	(44 20) 3037 1909

Alternative Energy

Shai Hill (Europe)	(44 20) 3037 4232
Robert Schramm (Europe)	(44 20) 3037 4559

Financials

Diversified Financials

Neil Welch (London)	(44 20) 3037 4272
William Howlett (London)	(44 20) 3037 4196

Banks

Edward Firth (Europe)	(44 20) 3037 4077
Alessandro Roccati (London)	(44 20) 3037 4254
Dave Johnston (London)	(44 20) 3037 4525
Benjie Creelan-Sandford (London)	(44 20) 3037 4081
Thomas Stoegner (London)	(44 20) 3037 4532
Piers Brown (London)	(44 20) 3037 4044
Jeff Harris (London)	(44 20) 3037 5065

Insurance

Hadley Cohen (London)	(44 20) 3037 4078
-----------------------	-------------------

Industrials

Capital Goods

Paul Butler (London)	(44 20) 3037 4450
Peter Steyn (Johannesburg)	(2711) 583 2337
Sam Dobson (London)	(44 20) 3037 1901

Equities

Stevan Vrcelj (Global Head)	(612) 8232 5999
Duarte Da Silva (Johannesburg)	(2711) 583 2000

UK Trading

Richard Bateson (London)	(44 20) 3037 4821
Julian Parmenter (London)	(44 20) 3037 4826
Thorsten Ackermann (London)	(44 20) 3037 4908
Colin Reed (London)	(44 20) 3037 4982
Robert Tappin (London)	(44 20) 3037 4827
Wayne Drayton (London)	(44 20) 3037 4980
Marc Crome (London)	(44 20) 3037 4778

UK Sales Trading

Daryl Bowden (London)	(44 20) 3037 4973
Greg Hill (London)	(44 20) 3037 4757
Drew Hendrickson (London)	(44 20) 3037 4784
James Buckley (London)	(44 20) 3037 4750
Jim Dixon (London)	(44 20) 3037 4949
Simona Casella (London)	(44 20) 3037 1721
KC O'Rourke (London)	(44 20) 3037 4910
Edward Robinson (London)	(44 20) 3037 4779
Danny Want (London)	(44 20) 3037 4847

US Sales Trading

Chris Reale (New York)	(1 212) 231 2555
Guy Devereux (New York)	(1 212) 231 2555

Industrials – cont

Autos

Christian Breitsprecher (Frankfurt)	(49 69) 50957 8014
Jens Schattner (Frankfurt)	(49 69) 50957 8026

Transportation – Infrastructure

Robert Joynson (London)	(44 20) 3037 4240
Peter Steyn (Johannesburg)	(2711) 583 2337
Markus Hesse (Frankfurt)	(49 69) 50957 8019

Materials

Chemicals/Containers, Packaging/Paper & Forest Products, Construction Materials

David Smith (Johannesburg)	(2711) 583 2248
Peter Steyn (Johannesburg)	(2711) 583 2337
Christian Faltz (Frankfurt)	(49 69) 50957 8017
Jürgen Reck (Frankfurt)	(49 69) 50957 8024

Global Metals & Mining

Jeff Largey (London)	(44 20) 3037 4359
Alon Olsha (London)	(44 20) 3037 2637
Michael Bogusz (Perth)	(618) 9224 0607
Avishkar Nagaser (Johannesburg)	(2711) 583 2280
Gareth Neilson (Johannesburg)	(2711) 583 2318
Kieran Daly (Johannesburg)	(2711) 583 2208
Thomas Mengel (Johannesburg)	(2711) 583 2307
Lee Bowers (Sydney)	(612) 8232 9834

Pharmaceuticals

Peter Düllman (Frankfurt)	(49 69) 50957 8016
Claudia Lakatos (Frankfurt)	(49 69) 50957 8022
Aadil Omar (Johannesburg)	(2711) 583 2305
Christian Peter (Zurich)	(41 44) 564 0226

Real Estate

Property Trusts & Developers

Leon Allison (Johannesburg)	(2711) 583 2209
Alex Moss (London)	(44 20) 3 037 4086

TMET

Telecommunications

Guy Peddy (London)	(44 20) 3037 4509
Martin Dullaart (Johannesburg)	(2711) 583 2322

Media

Martin Dullaart (Johannesburg)	(2711) 583 2322
Tim Nollen (London)	(1 212) 231 0635
Angus Tweedie (London)	(44 20) 3037 4099

Technology/IT/Internet

Marcus Sander (Frankfurt)	(49 69) 50957 8025
---------------------------	--------------------

Germany Trading

Elvis Javor (Frankfurt)	(49 69) 50957 8654
-------------------------	--------------------

Germany Sales Trading

Ralf Loke (Frankfurt)	(49 69) 50957 8833
Marcus Dunne (Frankfurt)	(49 69) 50957 8831

EU Cash Sales

Charles Nelson (London)	(44 20) 3037 4832
Richard Alderman (London)	(44 20) 3037 4875
Sam Bygott-Webb (London)	(44 20) 3037 4767
Luke Ahern (London)	(44 20) 3037 4960
Matthew Camacho (London)	(44 20) 3037 4972
Ed Reekie (London)	(44 20) 3037 4957
Jacob Potts (London)	(44 20) 3037 4929
Charles Lesser (London)	(44 20) 3037 4771
James Lumby (London)	(44 20) 3037 4846
Leon Caine (London)	(44 20) 3037 4954
Will Fairley (London)	(44 20) 3037 4787
Karl Filbert (Frankfurt)	(49 69) 50957 8651
Thomas Auschill (Frankfurt)	(49 69) 50957 8168
Markus Geisbuesch (Frankfurt)	(49 69) 50957 8709
Holger Hoepfner (Zurich)	(41 44) 564 0220

Utilities

Shai Hill (London)	(44 20) 3037 4232
Atallah Estephan (London)	(44 20) 3037 4356
Matthias Heck (Frankfurt)	(49 69) 50957 8018

Commodities & Precious Metals

Jim Lennon (London)	(44 20) 3037 4271
Colin Hamilton (London)	(44 20) 3037 4061
Duncan Hobbs (London)	(44 20) 3037 4497
Hayden Atkins (London)	(44 20) 3037 4476
Kona Haque (London)	(44 20) 3037 4334
Chris Gadd (London)	(44 20) 3037 1957
Bonnie Liu (Singapore)	(65) 6601 0144
Graeme Train (Shanghai)	(86 21) 2412 9035
Angela Bi (Shanghai)	(86 21) 2412 9086

European Macro Group

Economics

Daniel McCormack (Europe)	(852) 3922 4073
---------------------------	-----------------

Strategy

Matthias Jörss (Frankfurt)	(49 69) 50957 8021
George Brits (South Africa)	(2711) 583 2223

Quantitative

Gurvinder Brar (Global)	(44 20) 3037 4036
Christian Davies (London)	(44 20) 3037 4037
James Murray (London)	(44 20) 3037 1976
Inez Khoo (London)	(44 20) 3037 2640
George Ssali (Johannesburg)	(2711) 583 2364

Find our research at

Macquarie:	www.macquarie.com.au/research
Thomson:	www.thomson.com/financial
Reuters:	www.knowledge.reuters.com
Bloomberg:	MAC GO
Factset:	http://www.factset.com/home.aspx
CapitalIQ	www.capitaliq.com
TheMarkets.com	www.themarkets.com
Contact Gareth Warfield for access	(612) 8232 3207

Email addresses

FirstName.Surname@macquarie.com

eg. David.Rickards@macquarie.com

EU Cash Sales – cont

Martin Pommier (New York)	(1 212) 231 8054
Jan Halaska (Boston)	(1 617) 598 2503
Chris Carr (New York)	(1 212) 231-6398
Doug Stone (New York)	(1 212) 231 2606

South Africa Sales

Franco Lorenzani (Johannesburg)	(2711) 583 2014
William Ridge (Johannesburg)	(2711) 583 2060
Liam Graham (London)	(44 20) 3037 4836
Carleen Sobczyk (London)	(44 20) 3037 4988
Nazmeera Moola (Cape Town)	(2721) 813 2725
Russell Fryer (New York)	(1 212) 231 2504

South Africa Sales Trading

Harry Ioannou (Johannesburg)	(2711) 583 2015
Jesse Ushewokunze (Johannesburg)	(2711) 583 2017
Keith Thompson (Johannesburg)	(2711) 583 2058
Martin Hughes (Johannesburg)	(2711) 583 2019
Marcello Damilano (Johannesburg)	(2711) 583 2018
Roland Wood (Cape Town)	(2721) 813 2611